

# BEAR'S CLUB COTTAGE TRACT P2 - REPLAT NO. 1, A P.U.D.

183

BEING A REPLAT OF A PORTION OF COTTAGE TRACT "P2" AND A PORTION OF GOLF COURSE CLUBHOUSE TRACT "P1",  
AS SHOWN ON BEAR'S CLUB REPLAT, A P.U.D., RECORDED IN PLAT BOOK 106, PAGES 33 THROUGH 53,  
PUBLIC RECORDS OF PALM BEACH COUNTY, FLORIDA. LYING IN SECTION 19, TOWNSHIP 41 SOUTH, RANGE 43 EAST,  
TOWN OF JUPITER, PALM BEACH COUNTY, FLORIDA

APRIL 2012 SHEET 3 OF 3

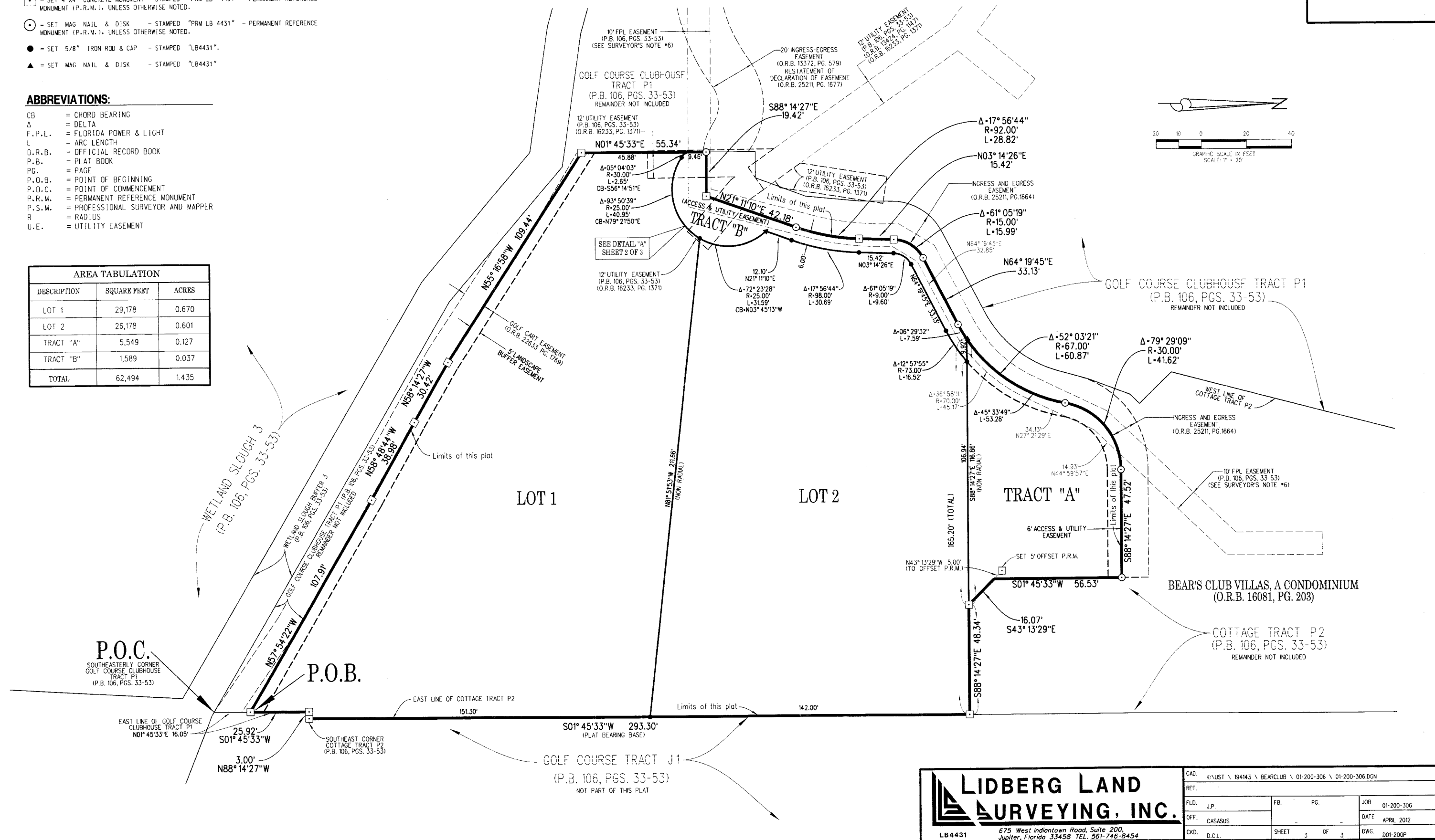
**LEGEND:**

- = SET 4"x4" CONCRETE MONUMENT - STAMPED "PRM LB 4431" - PERMANENT REFERENCE MONUMENT (P.R.M.), UNLESS OTHERWISE NOTED.
- = SET MAG NAIL & DISK - STAMPED "PRM LB 4431" - PERMANENT REFERENCE MONUMENT (P.R.M.), UNLESS OTHERWISE NOTED.
- = SET 5/8" IRON ROD & CAP - STAMPED "LB4431".
- ▲ = SET MAG NAIL & DISK - STAMPED "LB4431"

**ABBREVIATIONS:**

- CB = CHORD BEARING
- Δ = DELTA
- F.P.L. = FLORIDA POWER & LIGHT
- L = ARC LENGTH
- O.R.B. = OFFICIAL RECORD BOOK
- P.B. = PLAT BOOK
- PG. = PAGE
- P.O.B. = POINT OF BEGINNING
- P.O.C. = POINT OF COMMENCEMENT
- P.R.M. = PERMANENT REFERENCE MONUMENT
- P.S.M. = PROFESSIONAL SURVEYOR AND MAPPER
- R = RADIUS
- U.E. = UTILITY EASEMENT

AREA TABULATION		
DESCRIPTION	SQUARE FEET	ACRES
LOT 1	29,178	0.670
LOT 2	26,178	0.601
TRACT "A"	5,549	0.127
TRACT "B"	1,589	0.037
TOTAL	62,494	1.435



**LIDBERG LAND SURVEYING, INC.**

675 West Indiantown Road, Suite 200,  
Jupiter, Florida 33458 TEL. 561-746-8454

CAD. K:\AUST\104143\BEARCLUB\01-200-306\01-200-306.DGN		
REF.		
FLD. J.P.	FB. PG.	JOB 01-200-306
OFF. CASASUS		DATE APRIL 2012
CKD. D.C.L.	SHEET 3 OF 3	DWG. 001-200P